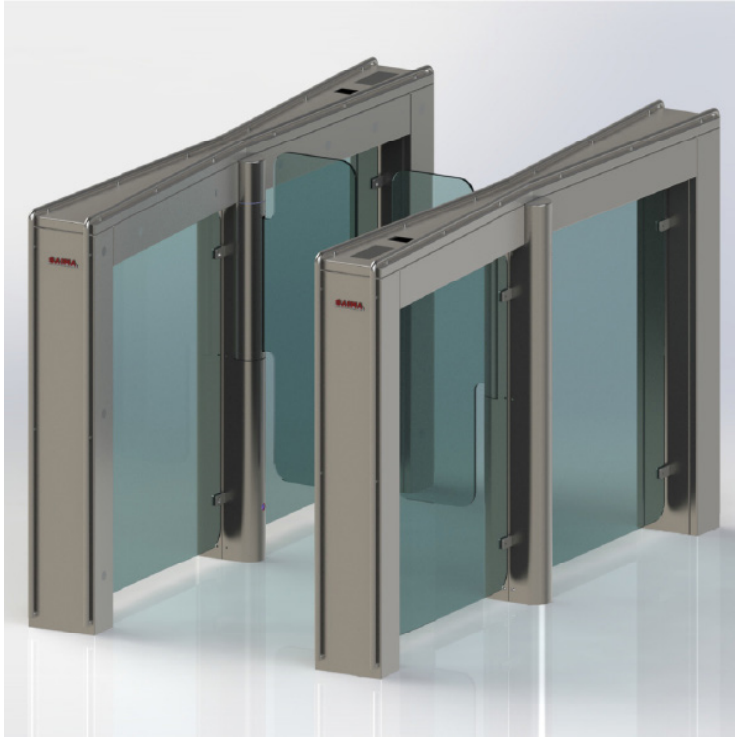


MOTORIZED GATE

The **SWING GATE 279** is a motorized gate where the essence of raw materials such as steel and glass are shaped by the typical **ITALIAN STYLE**, to make entrances particularly elegant and secure.

This system for access control is composed by two or more cabinets that through swing glass enable the entrance and exit.

It is possible to have the **SWING GATE 279** with a larger gate in order to respect the disable rule. Moreover the customer can choose different glass height to increase the physical security of the gate.

FEATURES

- Predisposition to house recognition system such as badge reader, proximity free hands, biometric etc.,
- Lateral panels made in finely shaped stainless steel
- Swing panel in tempered crystal
- Upper covers made in shockproof, scratch proof material
- Led indicators for semaphore signs
- Anti-queue control through infrared sensors
- Security photocells
- Command console (optional)

Electrical System

Power Supply: 220V +/- 10%, 50Hz.
 Max absorbed power for each passage: 400 W.
 Working temperature: -10 °C / 55 °C.
 Motors: 24Vcc for reversible arms movement
 Both arms opening in case of emergency
 Accident prevention: photocells on the passage walls, both in entry and exit and control system to grant the adjustment of the engine torque

Structure

Frame: AISI stainless steel

Dimensions and weights

Weight: 150 Kg.

MOTORIZED GATE

Technical features

