

International Cylinders

The Medeco® reach extends to six continents. Medeco® cylinders are used to protect facilities worldwide such as high security government installations, industrial and institutional organizations, airports, hotels, power plants, palaces, museums, universities and schools, and office buildings. Medeco's international cylinders are designed to fit in locksets of major world manufacturers. In addition to international uses, many of these cylinders fit imported hardware used in North America. Medeco® offers a variety of export cylinders including European profile and modular cylinders. These products are available in both mechanical and eCylinder technologies. The Medeco® European Profile cylinder has a teardrop shape that fits into storm doors, upscale hardware and specialty applications and is available in single, half and double cylinder versions. Additional cylinders in the 23 series include: oval, round, and "snowman" designs.



Benefits:

- Utility patented key control provides protection from unauthorized duplication of keys in most countries
- Superior master keying capability to accommodate systems of virtually any size
- Triple locking principle provides pick resistance and large numbers of combinations for master keying flexibility to accommodate systems of virtually any size
- Hardened steel inserts positioned in critical areas of the cylinder, provide a high degree of drill resistance
- Solid brass construction provides high quality and long cylinder life
- Nickel plated pins provide exceptional wear resistance and additional hardened stainless steel pins provide drill resistance
- European profile Cylinders retrofit into virtually any manufactureres' locksets requiring DIN Standard cylinders
- Pending UL437 Listing assures superior pick and drill resistance
- Pin chamber set screws provide ease of rekeying and resist comb attacks
- 5 and 6 pin cylinder available

Certification:

- SKG *** Netherlands
- Swedish Standards SS3522
- EN1303 - 2005
- DIN18254

Warranty:

Warranted for two (2) years against manufacturer's defects. See the Medeco® limited warranty for full details

Available Key Technologies:

Mechanical:

- Medeco³
- Medeco³ BiLevel
- Medeco X4

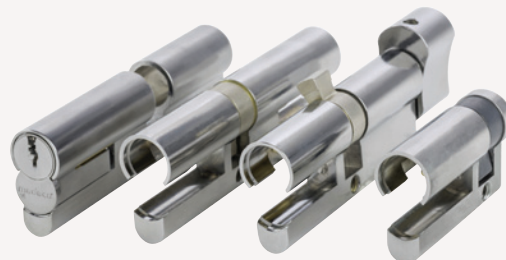
eCylinder:

- Medeco³ Logic
- Medeco Logic
- Medeco XT

EPIC–Euro Profile Interchangeable Core

Medeco Profile cylinders can now be ordered to accept a special, slab-sided, small format interchangeable core (SFIC) cylinders to retrofit into most standard European Profile applications.

Medeco Euro profiles can be furnished with Medeco's patented X4 technology, offering unmatched key control, the widest array of retrofit cylinders and four times the master keying capability.



Benefits:

- Utility patented key control provides protection from unauthorized duplication of keys in most countries
- Superior master keying capability to accommodate systems of very large sizes
- Solid brass construction provides high quality and long cylinder life
- Solid Nickel Silver Pins and Keys
- European Profile Cylinders retrofit into virtually any manufactureres' locksets equivalent to DIN Standards

Warranty

Warranted for two years against manufacturing defects. See Medeco Limited Warranty for full details.

Medeco X4 Technical Information

- 6 and 7 Pin cylinders available
- Solid nickel silver pins
- Many cylinder formats available
- Profiles available in multiple sizes, finishes and functions
- Where interchangeable core is not required, Euro's are also available in modular components and assembled standard lengths.

Part Numbers

6 Pin Part Numbers

- 23-26D21-XX EPIC Euro Double 37.9 mm/37.9mm
- 23-26H01-XX EPIC Euro Half 37.9mm
- 23-26S12X-XX EPIC Euro w/T*Turn 40mm int/39.2 mm ext
- Uses SFIC Part#: 33-60000R

7 Pin Part Numbers

- 23-24D21-XX EPIC Euro Double 41.73mm/41.73mm
- 23-24D25-XX EPIC Euro Double 41.73mm/55mm
- 23-24H01-XX EPIC Euro Half 41.73mm
- 23-24H05-XX EPIC Euro Half 55mm
- 23-24S12X-XX EPIC w/T*Turn 40mm int/43mm ext
- 23-24S15X-XX EPIC w/T*Turn 40mm int/55mm ext
- 23-24S52X-XX EPIC w/T*Turn 55mm int/43mm ext
- Uses SFIC Part#: 33-70000R

How To Order International Cylinders - Euro-Profile

<p>1</p> <p>23T13005-500 base part #</p> <p>Refer to pages 98-121 for descriptions and technical specifications to find the corresponding base part number.</p>	<p>2</p> <p>- 05 - finish</p> <p>Refer to the inside back cover of this catalog for finish options. Include the corresponding two digit finish number.</p> <p>Upcharge for split finish.</p>	<p>3</p> <p>XX - keyway</p> <p>Insert keyway if known or contact CS for help.</p>	<p>4</p> <p>S - pinning</p> <table border="1"> <tr> <td> <p>S = Sub-assembled (Uncombined) No additional information needed</p> </td> <td> <p>P = Pinned (Combined) Keyed alike (KA) Keyed different (KD) 2 keys per cylinder</p> <p>Captive Deadbolt 1 change key and 1 thumbturn key</p> </td> <td> <p>M = Master Keyed Provide specific pinning or contact Customer Service for support Must specify quantity for keys.</p> </td> </tr> </table>	<p>S = Sub-assembled (Uncombined) No additional information needed</p>	<p>P = Pinned (Combined) Keyed alike (KA) Keyed different (KD) 2 keys per cylinder</p> <p>Captive Deadbolt 1 change key and 1 thumbturn key</p>	<p>M = Master Keyed Provide specific pinning or contact Customer Service for support Must specify quantity for keys.</p>
<p>S = Sub-assembled (Uncombined) No additional information needed</p>	<p>P = Pinned (Combined) Keyed alike (KA) Keyed different (KD) 2 keys per cylinder</p> <p>Captive Deadbolt 1 change key and 1 thumbturn key</p>	<p>M = Master Keyed Provide specific pinning or contact Customer Service for support Must specify quantity for keys.</p>				

BUILD A BASE PART #:

International High Security Cylinder

Technology

- = Original
- W = Biaxial
- B = BiLevel
- T = Medeco³
- J = Medeco³ BiLevel

Profile Design

Keys

- 0 = With Keys
- 5 = Less Keys

Function

- *0 = Thumbturn Cylinder with "SR" Round Knob
- 1 = Half Cylinder
- 2 = Double Cylinder
- *3 = Thumbturn Cylinder with Low Profile "LP" Knob
- *4 = Thumbturn Cylinder with Decorative "RD" Knob
- *5 = Thumbturn Cylinder with Lever "RL" Knob

Number of Pins

- 5 = 5 Pins
- 6 = 6 Pins

*Thumbturn/Cam position available at 5 and 11 o'clock only

23 * 13 0 X X X - X X X - XX - XX X

International High Security Cylinder

Technology

Profile Design

Keys

Function

Number of Pins

Finish

Keyway

Pinning

- S = Sub Assembled
- P = Pinned
- M = Master Keyed

Interior/Exterior Length Extensions

0 = No Extension	5 = 25 mm (.984")
1 = 5 mm (.197")	6 = 30 mm (1.18")
2 = 10 mm (.394")	7 = 35 mm (1.38")
3 = 15 mm (.591")	8 = 40 mm (1.57")
4 = 20 mm (.787")	9 = 45 mm (1.77")

Cam Position (from outside with Bible down)

- 1 = 1 o'clock
- 2 = 10 point multi-gear
- 5 = 5 o'clock
- 7 = 7 o'clock
- 8 = Multiposition (half cylinder only)
- 0 = 11 o'clock

BiLevel with Original Technology

- H = High Security
- B = Standard Security

Refer to the eCylinder section for more detail on specific technologies available and pricing. The * in the part number is replaced with: T = Medeco³, S = Medeco³ Logic, J = Medeco³ BiLevel, W = Biaxial, V = Medeco Biaxial Logic, K = Medeco KM, N = Medeco X4, C = Medeco Logic, "-" = Original, Z = Medeco Original KW Logic, G = Medeco XT *See key section for surcharges for custom coined cut keys or special stamping requirements.
Note: (P) refers to **Pinned** and **(S)** to **Sub-Pinned** at the end of each part string in the price book.

How To Order Other International Cylinders

Complete part numbers are required for all orders. To determine the correct part number, fill in the "X's" in sequential order.

<p>1</p> <p>23T23005-500 base part #</p> <p>Refer to pages 98-121 for descriptions and technical specifications to find the corresponding base part number.</p>	<p>2</p> <p>- 05 - finish</p> <p>Refer to the inside back cover of this catalog for finish options. Include the corresponding two digit finish number.</p> <p>Upcharge for split finish.</p>	<p>3</p> <p>XX - keyway</p> <p>Insert keyway if known or contact CS for help.</p>	<p>4</p> <p>S - pinning</p> <table border="1"> <tr> <td> <p>S = Sub-assembled (Uncombined) No additional information needed</p> </td> <td> <p>P = Pinned (Combined) Keyed alike (KA) Keyed different (KD) 2 keys per cylinder</p> </td> <td> <p>M = Master Keyed Provide specific pinning or contact Customer Service for support Must specify quantity for keys.</p> </td> </tr> <tr> <td colspan="3"> <p>Captive Deadbolt 1 change key and 1 thumbturn key</p> </td> </tr> </table>	<p>S = Sub-assembled (Uncombined) No additional information needed</p>	<p>P = Pinned (Combined) Keyed alike (KA) Keyed different (KD) 2 keys per cylinder</p>	<p>M = Master Keyed Provide specific pinning or contact Customer Service for support Must specify quantity for keys.</p>	<p>Captive Deadbolt 1 change key and 1 thumbturn key</p>		
<p>S = Sub-assembled (Uncombined) No additional information needed</p>	<p>P = Pinned (Combined) Keyed alike (KA) Keyed different (KD) 2 keys per cylinder</p>	<p>M = Master Keyed Provide specific pinning or contact Customer Service for support Must specify quantity for keys.</p>							
<p>Captive Deadbolt 1 change key and 1 thumbturn key</p>									

BUILD A BASE PART #:

23 * XX 0 X X X - X 0 0 - XX - XX X

International High Security Cylinder

Series

- = Original
- W = Biaxial
- B = BiLevel
- T = Medeco³
- N = Medeco X4

Design

- 01 = Danish Round (Ruko Round)
- 03 = Australian Oval
- 04 = British Oval (Union Oval)†
- 05 = Scandinavian Oval Ext. (ASSA Oval)
- 06 = Scandinavian Oval Int. (ASSA Oval)
- 07 = Norwegian Oval (TrioVing Oval)
- 08 = Scandinavian Snowman
- 09 = Scandinavian Round Ext. (ASSA Round)
- 10 = Scandinavian Round Int. (ASSA Round)
- 14 = Italian Outer Gate Lock, 3 Pin
- 15 = Italian Outer Gate Lock, 5 Pin
- 16 = Italian Roller Shutter, 4 Pin
- 22 = EuroLine Modular Profile Module
- 23 = EuroLine Modular Cylinder Complete

Keys

- 0 = With Keys
- 5 = Less Keys

Function

- 0 = Thumbturn Cylinder with "RL" Knob
- 1 = Half Cylinder
- 2 = Double Cylinder

Function - Modular

- 0 = Thumbturn Cylinder with "SR" Round Knob
- 3 = Thumbturn Cylinder with Low Profile "LP" Knob
- 4 = Thumbturn Cylinder with Decorative "RD" Knob
- 5 = Thumbturn Cylinder with Lever "RL" Knob

† Union Oval Thumbturn Position at 5 and 11 o'clock only

Pinning

- S = Sub Assembled
- P = Pinned
- M = Master Keyed

Keyway

Finish

Cam Position (British Oval)

- 0 = 11 o'clock
- 1 = 1 o'clock
- 5 = 5 o'clock
- 7 = 7 o'clock

300 = EuroLine Modular
301 = Euroline Modular ext. 5mm (Double Only)

BiLevel w/ Original Technology

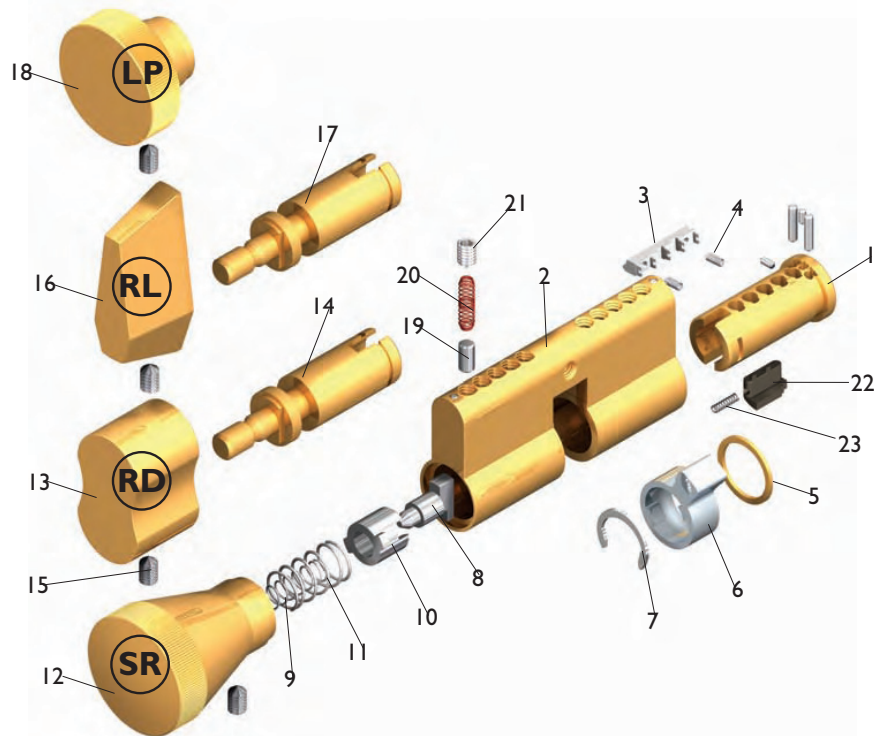
- H = High Security
- B = Standard Security

Number of Pins

- 3 = 3 Pins
- 4 = 4 Pins
- 5 = 5 Pins
- 6 = 6 Pins
- 7 = 7 Pins

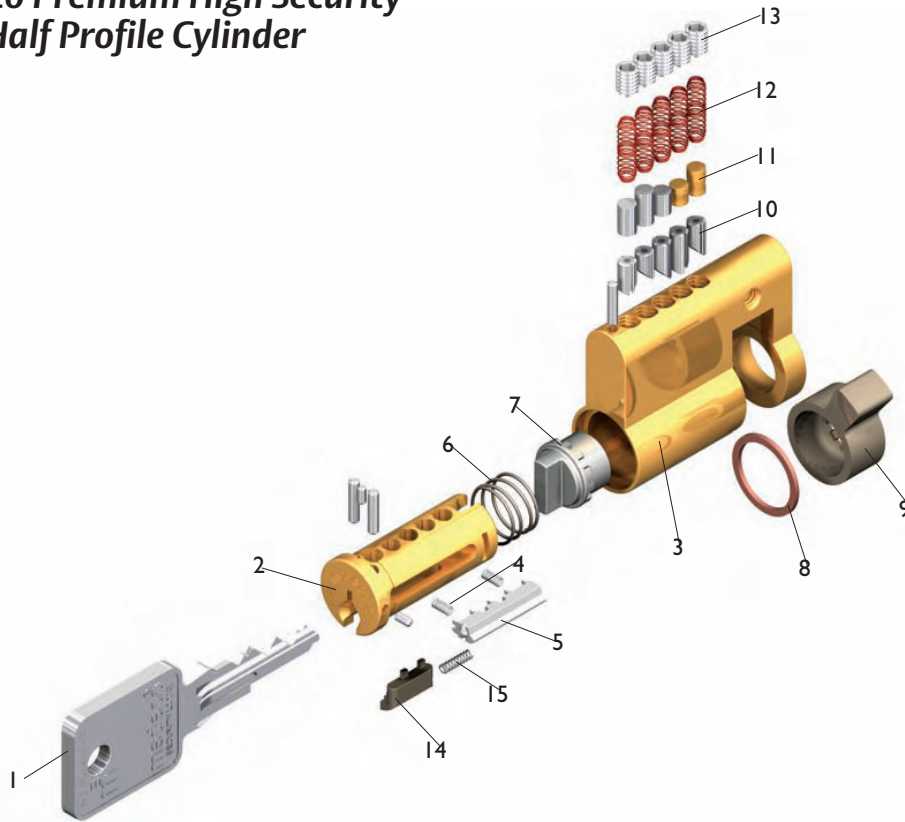
**Refer to the eCylinder section for more detail on specific technologies available and pricing. The * in the part number is replaced with:
 T = Medeco³, S = Medeco³ Logic, J = Medeco³ BiLevel, W = Biaxial, V = Medeco Biaxial Logic, K = Medeco KM, N = Medeco X4, C = Medeco Logic,
 "-." = Original, Z = Medeco Original KW Logic, G = Medeco XT ***See key section for surcharges for custom coined cut keys or special stamping requirements.
Note: (P) refers to Pinned and (S) to Sub-Pinned at the end of each part string in the price book.

Medeco Premium High Security Euro Thumbturn Profile Cylinder



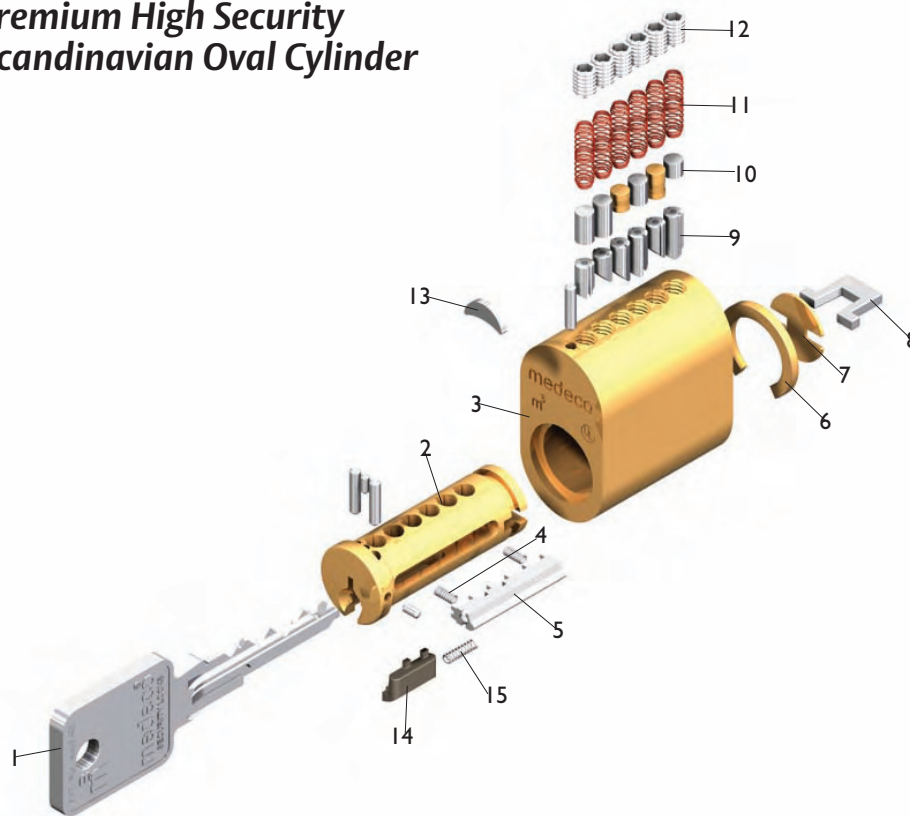
Item	Part Number	Part Number
1	Plug	Cylinder Specific
2	Shell	Cylinder Specific
3	Sidebar	CP-084X71
4	Sidebar Springs	CP-030018
5	Plug Retainer Ring	CP-021490
6	Cam	CT-Z51
7	Thumbturn Retaining Clip	CP-020031
8	Actuator	CP-100111
9	Actuator Spring	CP-030025
10	Actuator Pilot	CP-280261
11	Pilot Spring	CP-030024
12	Standard Round "SR" Thumbturn	CP-285961-FN
13	Decorative "RD" Thumbturn	CP-285901-FN
14	Thumbturn Shaft - 6 Pin	CP-240761-6XX
15	Thumbturn Allen Set Screw #6-32 x 3/16" Knurled Cup Point	CP-012411-040
16	Lever "RL" Thumbturn	CP-285931-FN
17	Thumbturn Shaft - 5 Pin	CP-240761-5XX
18	Low Profile "LP" Thumbturn	CP-285991-FN
19	Thumbturn Retaining Pin	TP-F10-1T
20	Thumbturn Retaining Pin Spring	CP-030001
21	Thumbturn Retaining Pin Allen Set Screw #8-32 x 1/4"	CP-011013-040
22	Slider	CP-084591-XX
23	Slider Spring	CP-030910
24	Spade Thumbturn (Not Pictured "Special Order")	CP-286051-FN
25	Crescent Thumbturn (Not Pictured "Special Order")	CP-286021-FN

Medeco Premium High Security Euro Half Profile Cylinder



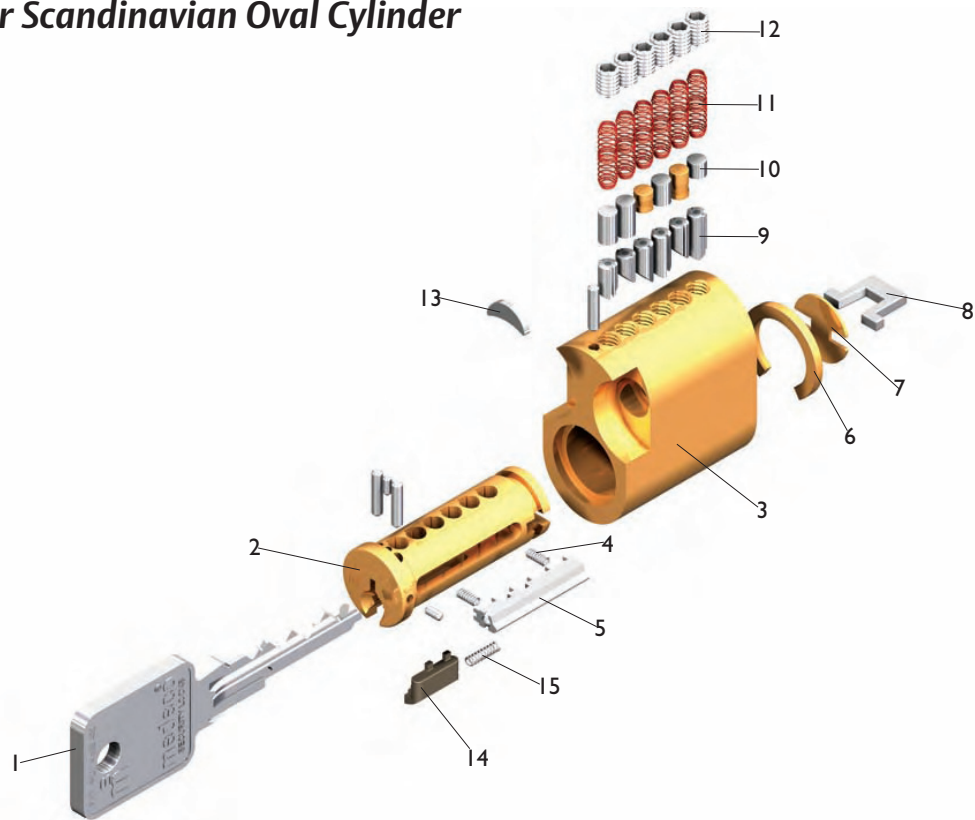
Item	Part Number	Part Number
1	Key	As Required
2	Plug	Cylinder Specific
3	Shell	Cylinder Specific
4	Sidebar Springs	CP-030018
5	Sidebar	CP-084X71
6	Cam Spring	CP-030860
7	Actuator	CP-220090
8	Plug Retainer	CP-021490
9	Cam	CT-Z88
10	Bottom Pins	As Required
11	Top Pins	As Required
12	Springs (Phosphor Bronze)	CP-030001
13	Pin Chamber Allen Set Screws #8-32 x 1/4"	CP-011013-040
14	Slider	CP-084591-XX
15	Slider Spring	CP-030910

Medeco Premium High Security Exterior Scandinavian Oval Cylinder



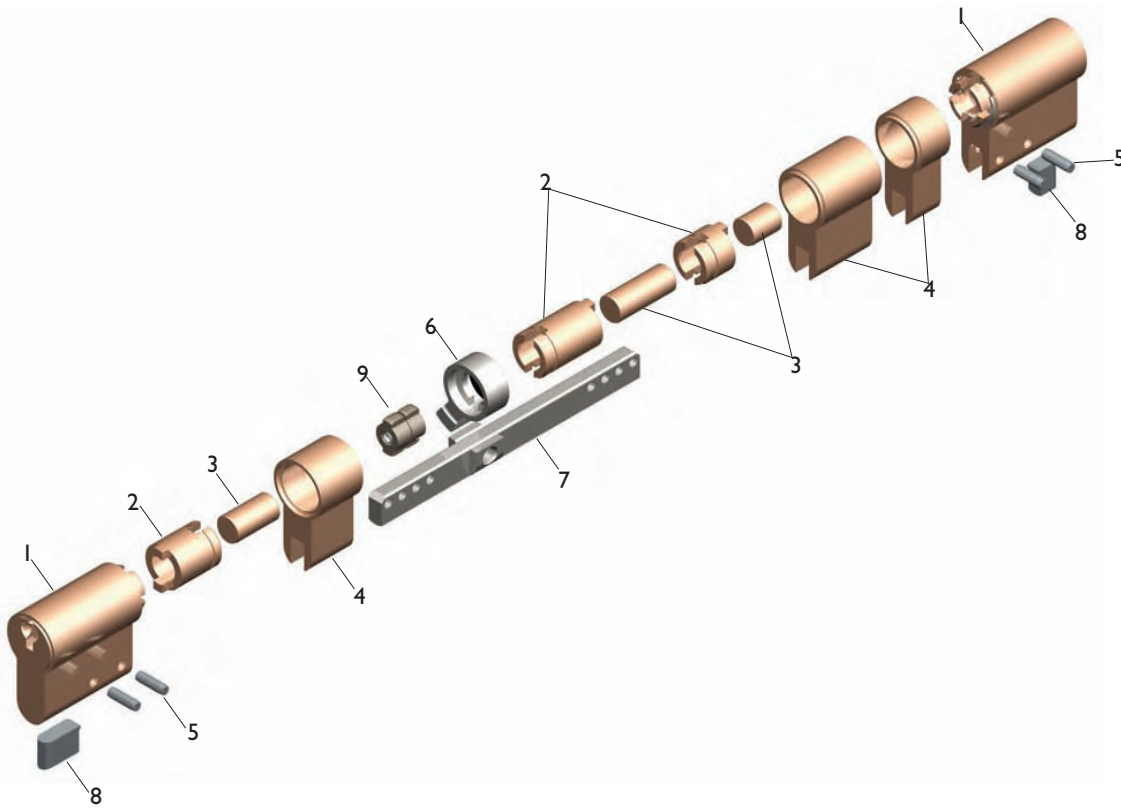
Item	Part Number	Part Number
1	Key	As Required
2	Plug	Cylinder Specific
3	Shell	Cylinder Specific
4	Sidebar Springs	CP-030018
5	Sidebar, 6 Pin	CP-084671
6	Plug Retainer	CP-021040
7	Plate	CP-180830
8	Tailpiece	CT-Y76
9	Bottom Pins	As Required
10	Top Pins	As Required
11	Springs (Phosphor Bronze)	CP-030001
12	Pin Chamber Allen Set Screws #8-32 x 1/4"	CP-011013-040
13	Crescent Steel Insert	CP-180011
14	Slider	CP-084591-XX
15	Slider Spring	CP-030910

Medeco Premium High Security Interior Scandinavian Oval Cylinder



Item	Part Number	Part Number
1	Key	As Required
2	Plug	Cylinder Specific
3	Shell	Cylinder Specific
4	Sidebar Springs	CP-030018
5	Sidebar, 6 Pin	CP-084671
6	Plug Retainer	CP-021040
7	Plate	CP-180830
8	Tailpiece	CT-Y76
9	Bottom Pins	As Required
10	Top Pins	As Required
11	Springs (Phosphor Bronze)	CP-030001
12	Pin Chamber Allen Set Screws #8-32 x 1/4"	CP-011013-040
13	Crescent Steel Inserts	CP-180011
14	Slider	CP-084591-XX
15	Slider Spring	CP-030910

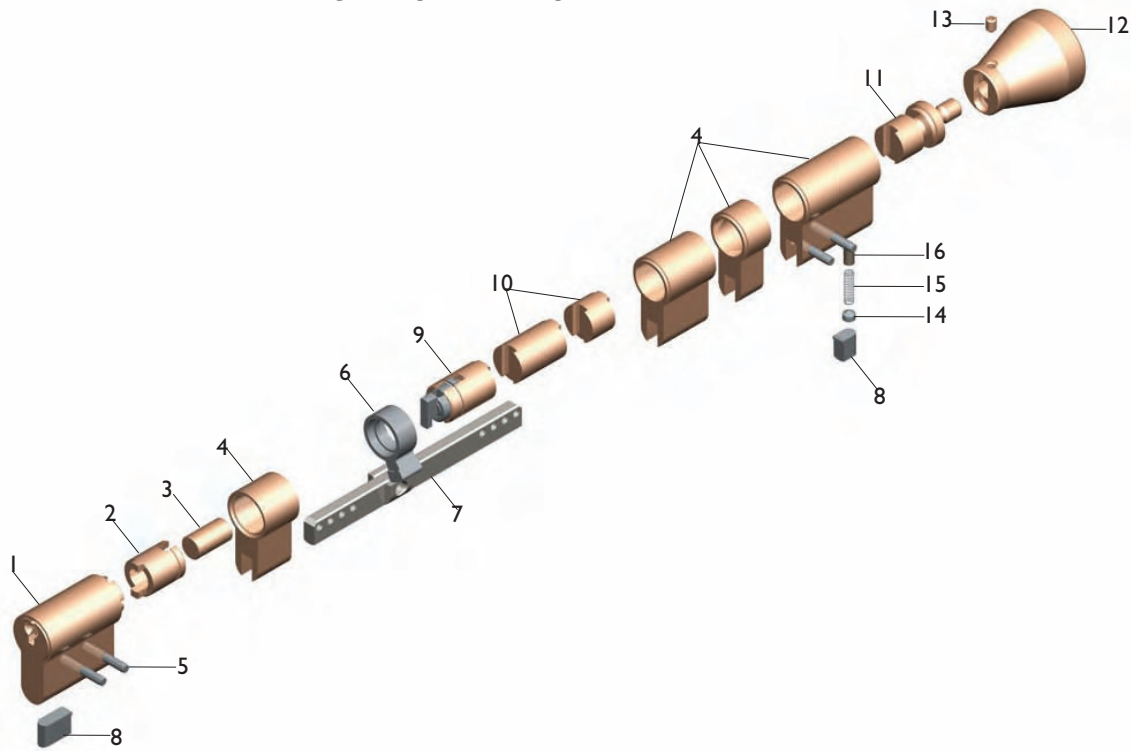
**Medeco Premium High Security
EuroLine Modular Profile Cylinder System**



Modular Profile Double Cylinder

Item	Part Number	Part Number
1	Cylinder Module (5 or 6 Pin)	23X220XX-30X
2	Outer Plug Extension	CP-200751
3	Inner Plug Extension	CP-200761
4	Brass Shell Extension	CP-200771
5	Groove Pins	CP-063220
6	Cam	CT-Z50
7	Connecting Bar	CP-200801
8	Bar Filler	CP-160661
9	Clutch Assembly	CP-220071

Medeco Premium High Security EuroLine Modular Profile Cylinder System



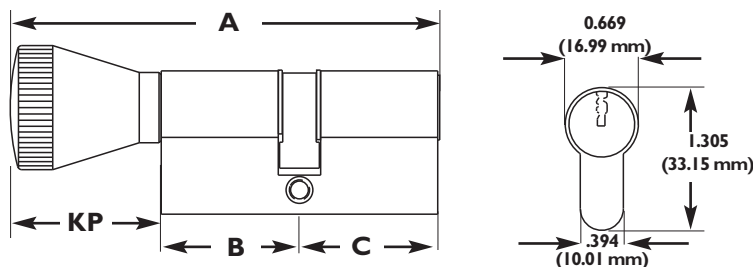
Modular Profile Single Cylinder with Thumbturn

Item	Part Number	Part Number
1	Cylinder Module (5 or 6 Pin)	23X220XX-30X
2	Outer Plug Extension	CP-200751
3	Inner Plug Extension	CP-200761
4	Brass Shell Extension	CP-200771
5	Groove Pins	CP-063220
6	Cam	CP-Z51
7	Connecting Bar	CP-200801
8	Bar Filler	CP-160661
9	Thumbturn Actuator Cartridge	CP-220131
10	Thumbturn Cartridge Extension	CP-200781
11	Thumbturn Shaft	CP-240771-XP
12	Thumbturn Knob	See Page 116
13	Thumbturn Set Screw	CP-011013-020
14	Thumbturn Retaining Set Screw 8- 32 x 1/4"	CP-011013-040
15	Thumbturn Retaining Pin Spring	CP-030001
16	Thumbturn Retaining Pin	TP-F10-IT

Euro Profile Technical Information

A = Total Length	C = Exterior Length
B = Interior Length	KP =

EURO PROFILE SINGLE CYLINDER WITH THUMBTURN



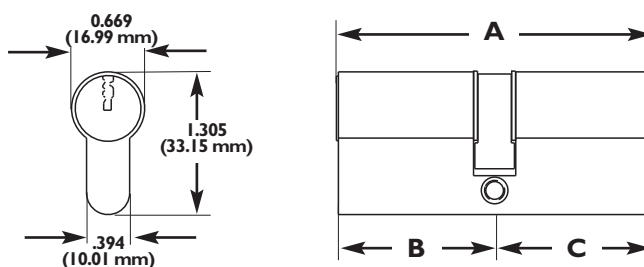
Euro Profile Single Cylinder with Thumbturn

Part#	A	B	C	KP
23*13005-X00	99.04	31.98	31.98	35.08
23*13035-X00	81.44	31.98	31.98	17.48
23*13045-X00	83.09	31.98	31.98	19.13
23*13055-X00	84.1	31.98	31.98	20.14
23*13006-X00	107.68	36.3	36.3	35.08
23*13036-X00	90.08	36.3	36.3	17.48
23*13046-X00	91.73	36.3	36.3	19.13
23*13056-X00	92.74	36.3	36.3	20.14
49*0264	84.3	31.98	31.98	20.35
49*0291	92.94	36.3	36.3	20.35

Euro Profile Technical Information

A = Total Length	C = Exterior Length
B = Interior Length	

EURO PROFILE DOUBLE CYLINDER



Euro Profile Single Cylinder with Thumbturn

Part#	A	B	C
23*13025-X00	63.96	31.98	31.98
23*13026-X00	72.59	36.3	36.3
23*13025-X01	68.96	31.98	36.98
23*13025-X02	73.96	31.98	41.99
23*13025-X11	73.96	36.98	36.98
23*13025-X12	78.97	36.98	41.99
23*13026-X01	77.6	36.3	41.3
23*13026-X02	82.6	36.3	46.3
23*13026-X12	87.6	41.3	46.3

All table measurements in millimeters.

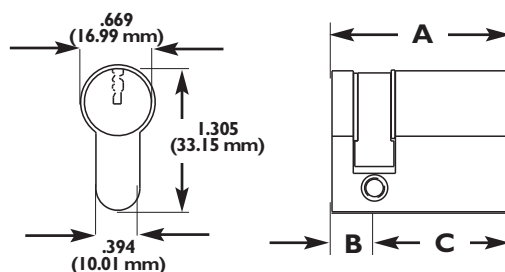
Euro Profile Technical Information

A = Total Length

C = Exterior Length

B = Interior Length

EURO PROFILE DOUBLE CYLINDER



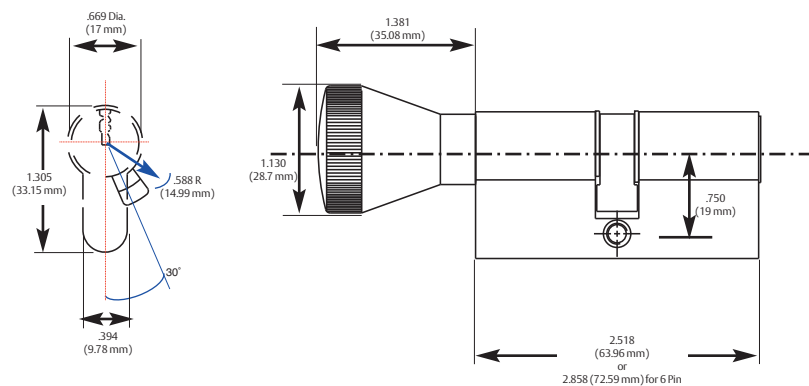
Euro Profile Single Cylinder with Thumbturn

Part#	A	B	C
23*13015-800	41.99	10.01	31.98
23*13016-800	46.4	10.01	36.3
23*13015-801	46.99	10.01	36.98
23*13016-801	51.31	10.01	41.3

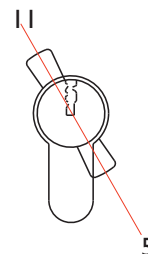
All table measurements in millimeters.

Euro Profile Technical Information

Single Cylinder with Thumbturn (Standard Length)

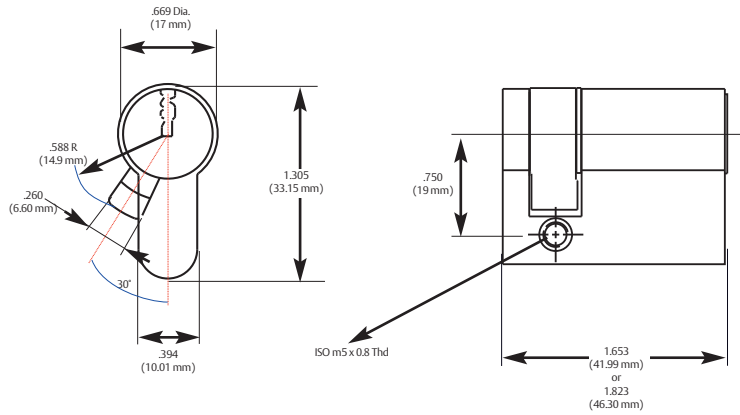


Cam position code as shown from outside.

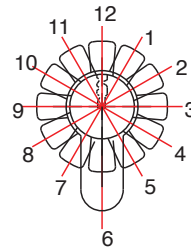


Part #: 23*13005-XXX 5 Pin
23*13006-XXX 6 Pin

Half Cylinder (Standard Length)



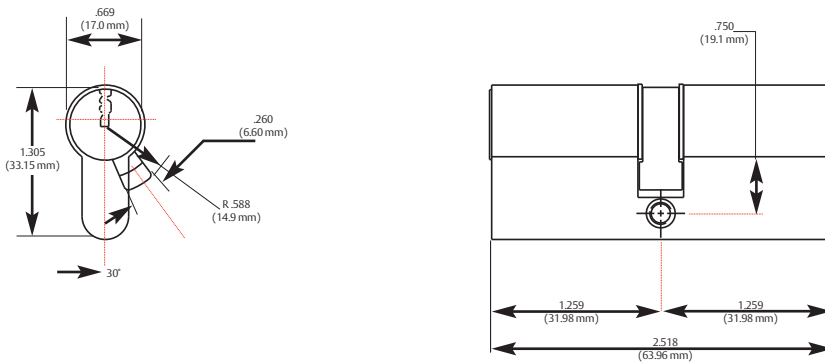
Cam position code as shown from outside.



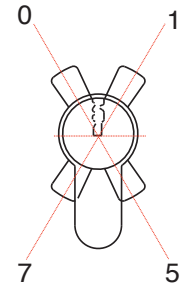
Multi-indexing cam with 12 positions. Cam is set at 5 o'clock from the factory

Part #: 23*13015-800 5 Pin
23*13016-800 6 Pin

Double Cylinder 5 Pin (Standard and Extended)

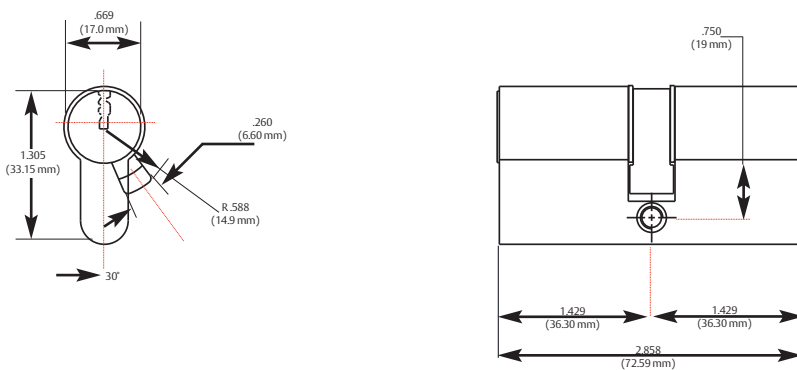


Cam position code as shown from outside.

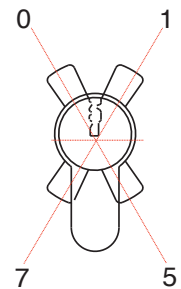


Part #: 23*13025-X00 5 Pin
In 5mm steps up to 45mm

Double Cylinder 6 Pin (Standard and Extended)

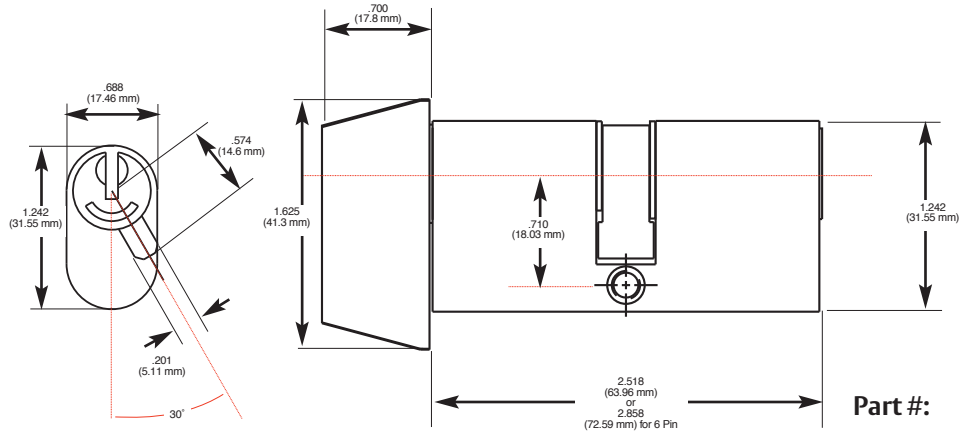


Cam position code as shown from outside.

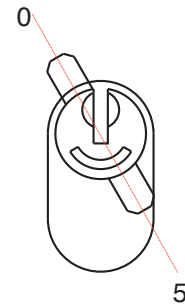


Part #: 23*13026-X00 6 Pin
In 5mm steps up to 45mm

Union Single with Thumbturn

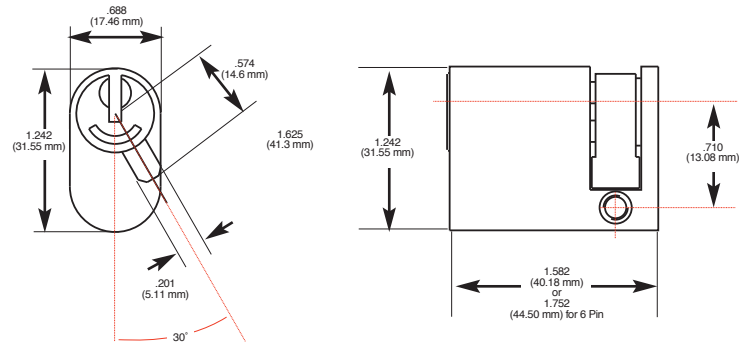


Cam position code as shown from outside.

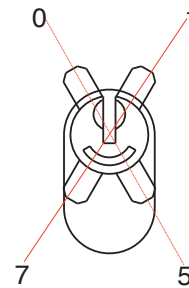


Part #: 23*04005-X00 5 Pin
23*04006-X00 6 Pin

Union Half Cylinder

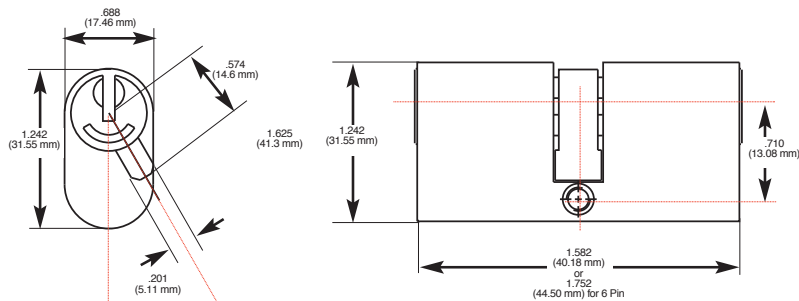


Cam position code as shown from outside.

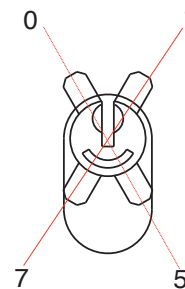


Part #: 23*04015-X00 5 Pin
23*04016-X00 6 Pin

Union Double Cylinder

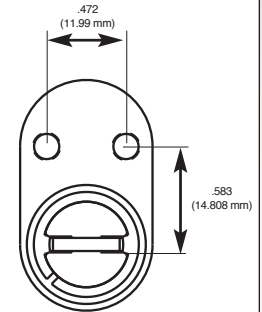
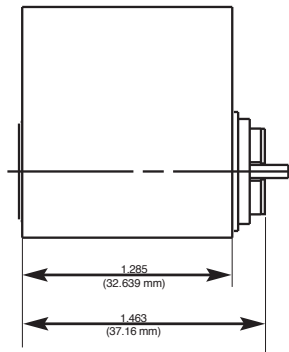
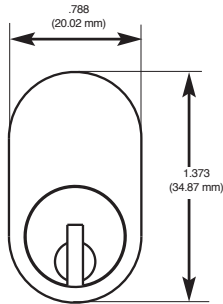


Cam position code as shown from outside.



Part #: 23*04025-X00 5 Pin
23*04026-X00 6 Pin

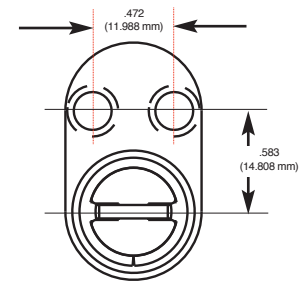
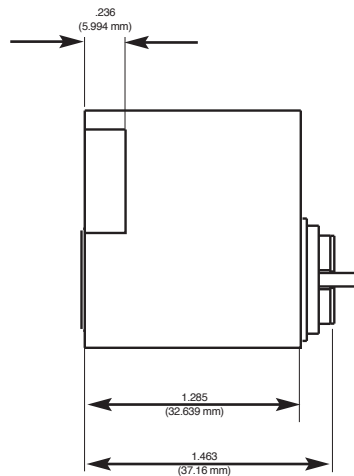
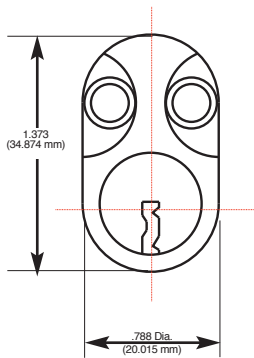
Scandinavian Oval – Exterior for ASSA/Ruko®



Tailpiece CT-Y76

Part #: 23*05016 6 Pin

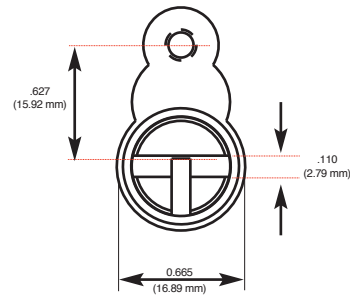
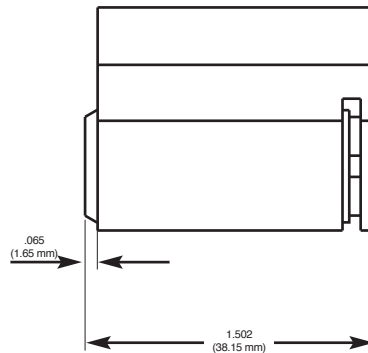
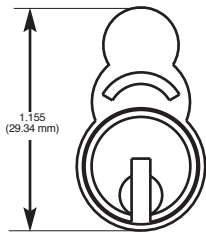
Scandinavian Oval – Interior for ASSA/Ruko®



Tailpiece CT-Y76

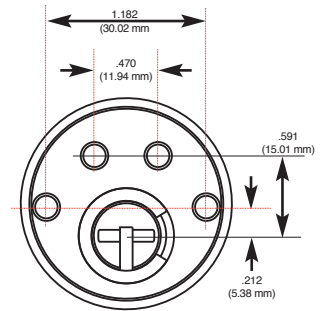
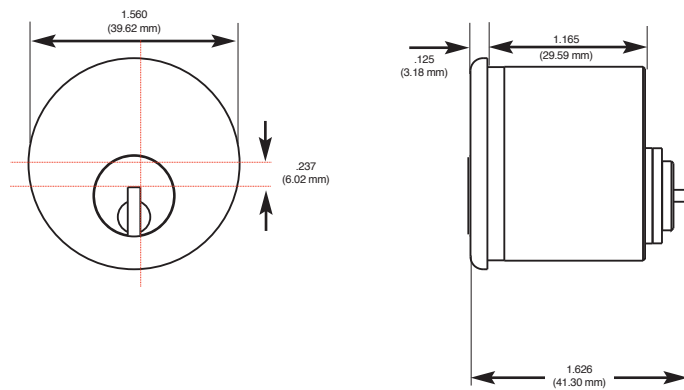
Part #: 23*06016 6 Pin

Scandinavian Padlock – for ASSA/Ruko®



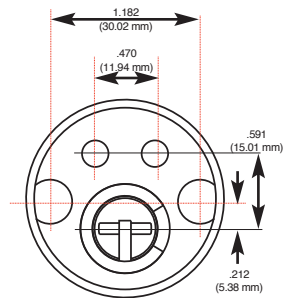
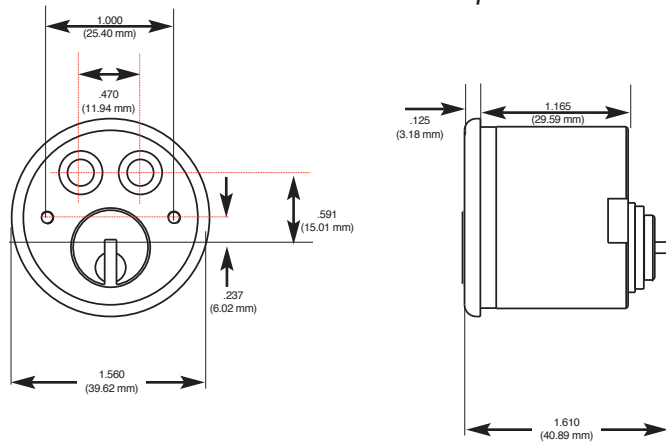
Part #: 23*08016X 6 Pin

Scandinavian Round Exterior – for ASSA/Ruko®



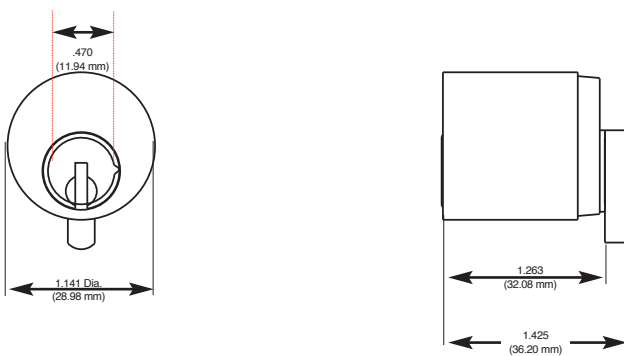
Part #: 23*09016X 6 Pin

Scandinavian Round Interior – for ASSA/Ruko®

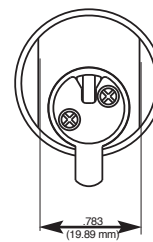


Part #: 23*10016 6 Pin

Danish Round – Exterior for Ruko®

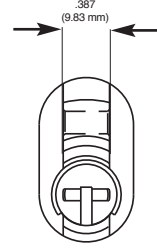
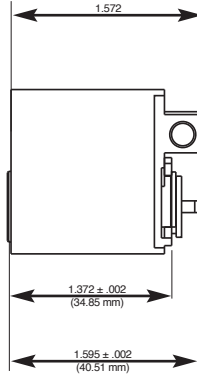
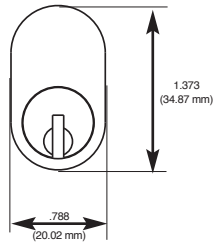


Special pinning required due to chamber height



Part #: 23*01016 6 Pin

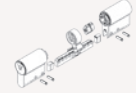
Norwegian Single Cylinder for Trio Ving®



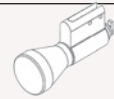
Part #: 23*070165 6 Pin

Euroline Modular Profile Kit

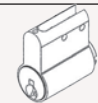
Description	Part Number
Euroline Modular Profile Kit - Danish	94-0243
Medeco XT Half Profile Modular Kit	94-0279
Euro Single/Double Thumbturn Kit Mechanical/Electric Available in Medeco XT or Medeco ³ Logic	94-0219
Medeco XT Cam for Doubles – Not included in kit	CT-Z98

**Euroline Modular Cylinder Assembled**

Description	Part Number
5 Pin Double Cylinder	23*23025-X00
6 Pin Double Cylinder	23*23026-X00
5 Pin Double Thumbturn/Cylinder	23*23005-X00
6 Pin Double Thumbturn/Cylinder	23*23006-X00

**Euroline Modular eCylinder Assembled**

Description	Part Number
Medeco XT, 5 pin half, extended nose	23G2301S-800
Medeco XT, 5 pin extended .5mm half, extended nose	23G2301S-801
Medeco ³ Logic, Thumbturn/Cylinder, 36/36mm	23S230X6-X00
Medeco ³ Logic Double, 36/36mm	23S230E6-X00
Special Pin Kit for Biaxial/Medeco ³ Logic Pinning	KW5401
Euro 1/2 Profile-30mm Assembled	23G2301S-800
Euro 1/2 Profile-35mm Assembled	23G2301S-801
Euro 1/2 Profile-30mm Assembled (True 30mm)	23G2301ST-800
Euro T/T Profile-30mm/30mm Assembled	23G230XS-X00
Euro T/T Profile-35mm/35mm Assembled	23G230XS-X11
Euro Dbl Profile Ectl/Mech-30mm/30mm Assembled	23G230E5-X00
Euro Dbl Profile Ectl/Mech-35mm/35mm Assembled	23G230E5-X11

**EuroLine Profile Cylinder Modules**

Description	Part Number
5 Pin Cylinder	23X22015-300
5 Pin Cylinder + 5mm	23X22015-301
6 Pin Cylinder	23X22016-300
6 Pin Cylinder + 5mm	23X22016-301
Medeco x4 Standard 7 Pin Cylinder	23N22017-300
Medeco x4 7 Pin + 5mm Cylinder	23N22017-301

**Refer to the eCylinder section for more detail on specific technologies available and pricing. The * in the part number is replaced with:
 T = Medeco³, S = Medeco³ Logic, J = Medeco³ BiLevel, W = Biaxial, V = Medeco Biaxial Logic, K = Medeco KM, N = Medeco X4, C = Medeco Logic,
 “-” = Original, Z = Medeco Original KW Logic, G = Medeco XT ***See key section for surcharges for custom coined cut keys or special stamping requirements.
Note: (P) refers to **Pinned** and **(S)** to **Sub-Pinned** at the end of each part string in the price book.

Euroline eCylinder Profile Medeco XT Modules

Description	Part Number
Medeco XT 30mm Half Only	23G2201S-300
Medeco XT 35mm Half Only	23G2201S-301
Euro 1/2 Module-30mm	23G2201S-300
Euro 1/2 Module-35mm	23G2201S-301
Euro 1/2 Module-40mm-85mm	23G2201S-302
Single/Double Cylinder Module-30mm	23G2202S-300
Single/Double Cylinder Module-35mm	23G2202S-301
Single/Double Cylinder Module-40mm-85mm	23G2202S-302

Euroline eCylinder Profile Medeco³ Logic Modules

Description	Part Number
Medeco ³ Logic, 6 pin Module	23S22016-300
Medeco ³ Logic 6 pin + 5mm	23S22016-301

**EuroLine Profile Thumbturn Modules**

Description	Part Number
5 Pin Thumbturn	23-220X5-300
6 Pin Thumbturn	23-220X6-300

Euroline Profile Medeco XT Thumbturn Modules

Description	Part Number
Euro Thumbturn Module - 30mm	23-220XS-300

To order the Euro Thumbturn Module 35mm, you must add the shell ext. CP20071-05 and cart ext. CP-200781-05 to the 30mm Module

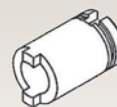
Special Cylinders

Description	Part Number
Lockwood Oval retrofit	23G03016
Aus 530 Style	20G1006
3-Tailpieces – For Australia Package	940283
Medeco XT Ruko Oval	23G05016

**Refer to the eCylinder section for more detail on specific technologies available and pricing. The * in the part number is replaced with:
 T = Medeco³, S = Medeco³ Logic, J = Medeco³ BjLevel, W = Biaxial, V = Medeco Biaxial Logic, K = Medeco KM, N = Medeco X4, C = Medeco Logic,
 “-” = Original, Z = Medeco Original KW Logic, G = Medeco XT ***See key section for surcharges for custom coined cut keys or special stamping requirements.
Note: (P) refers to **Pinned** and **(S)** to **Sub-Pinned** at the end of each part string in the price book.

Plug Extensions – Outer

*Quantities shown in parentheses below are included in the 94-0219 Euroline modular profile kit listed above. Additional items may be ordered individually.



Description	Part Number
10mm Kit Qty (20)	CP-200751-10
15mm Kit Qty (10)	CP-200751-15
20mm Kit Qty (5)	CP-200751-20
25mm Kit Qty (5)	CP-200751-25

**Plug Extensions – Inner**

Description	Part Number
5mm Kit Qty (20)	CP-200761-05
10mm Kit Qty (20)	CP-200761-10
15mm Kit Qty (10)	CP-200761-15
20mm Kit Qty (5)	CP-200761-20
25mm Kit Qty (5)	CP-200761-25

**Brass Shell Extensions**

Description	Part Number
5mm Kit Qty (20)	CP-200771-05
10mm Kit Qty (20)	CP-200771-10
15mm Kit Qty (10)	CP-200771-15
20mm Kit Qty (5)	CP-200771-20
25mm Kit Qty (5)	CP-200771-25

**Bar Filler (2 per cylinder)**

Description	Part Number
5 Pin - 0mm Kit Qty (35)	CP-160661-50
5 Pin - 5mm Kit Qty (35)	CP-160661-55
6 Pin - 0mm Kit Qty (35)	CP-160661-60
6 Pin - 5mm Kit Qty (35)	CP-160661-65

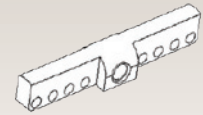
**Thumbturn Actuator Cartridge**

Description	Part Number
Cartridge Kit Qty (2)	CP-220131

**Thumbturn Cartridge Extension**

Description	Part Number
5mm Kit Qty (10)	CP-200781-05
10mm Kit Qty (10)	CP-200781-10
15mm Kit Qty (5)	CP-200781-15
20mm Kit Qty (5)	CP-200781-20
25mm Kit Qty (5)	CP-200781-25

**Refer to the eCylinder section for more detail on specific technologies available and pricing. The * in the part number is replaced with:
 T = Medeco³, S = Medeco³ Logic, J = Medeco³ BjLevel, W = Biaxial, V = Medeco Biaxial Logic, K = Medeco KM, N = Medeco X4, C = Medeco Logic,
 “.” = Original, Z = Medeco Original KW Logic, G = Medeco XT ***See key section for surcharges for custom coined cut keys or special stamping requirements.
Note: (P) refers to **Pinned** and **(S)** to **Sub-Pinned** at the end of each part string in the price book.



Connecting Bar

Description	Part Number
5mm Kit Qty (15)	CP-200801-00
10mm Kit Qty (5)	CP-200801-02
20mm Kit Qty (5)	CP-200801-04
30mm Kit Qty (5)	CP-200801-06
40mm Kit Qty (1)	CP-200801-08
50mm Kit Qty (1)	CP-200801-0A
10/10mm Kit Qty (5)	CP-200801-22
10/20mm Kit Qty (5)	CP-200801-24
10/30mm Kit Qty (3)	CP-200801-26
10/40mm Kit Qty (1)	CP-200801-28
10/50mm Kit Qty (1)	CP-200801-2A
20/20mm Kit Qty (3)	CP-200801-44
20/30mm Kit Qty (1)	CP-200801-46
20/40mm Kit Qty (1)	CP-200801-48
20/50mm Kit Qty (1)	CP-200801-4A
30/30mm Kit Qty (1)	CP-200801-66
30/40mm Kit Qty (1)	CP-200801-68
30/50mm Kit Qty (1)	CP-200801-6A
40/40mm Kit Qty (1)	CP-200801-88
40/50mm Kit Qty (1)	CP-200801-8A
50/50mm Kit Qty (1)	CP-200801-AA



Thumbturn Shaft

Description	Part Number
5 Pin Kit Qty (2)	CP-240771-5P
6 Pin Kit Qty (2)	CP-240771-6P



Modular Service Tools

Description	Part Number
Modular Assembly Block Kit Qty (1)	94-0208
Pinning Block Kit Qty (2)	94-0203
Pinning Block Medeco X4	94-0285
Capping Tool Kit Qty (2)	94-0207
Small flat blade screwdriver Kit Qty (1)	94-0221
Removing Punch, 2.3 mm Kit Qty (1)	94-0222
Installing punch, 6.35 mm Kit Qty (1)	94-0223
Allen Wrench, 1.588 mm Kit Qty (1)	CP-280330

Miscellaneous Components







Description	Part Number
Groove Pin Kit Qty (200)	CP-063220
Clutch Piece Assembly Kit Qty (20)	CP-220071
5 Pin Cover Kit Qty (50)	CP-170730-5
6 Pin Cover Kit Qty (50)	CP-170730-6
Double Cam Kit Qty (20)	CT-Z50
Thumbturn Cam Kit Qty (20)	CT-Z51

**Refer to the eCylinder section for more detail on specific technologies available and pricing. The * in the part number is replaced with:
 T = Medeco³, S = Medeco³ Logic, J = Medeco³ BjLevel, W = Biaxial, V = Medeco Biaxial Logic, K = Medeco KM, N = Medeco X4, C = Medeco Logic,
 “..” = Original, Z = Medeco Original KW Logic, G = Medeco XT ***See key section for surcharges for custom coined cut keys or special stamping requirements.
Note: (P) refers to **Pinned** and **(S)** to **Sub-Pinned** at the end of each part string in the price book.

Top Pins

Description	Part Number
1 top pin Kit Qty (200)	TP-F10-4T (.180")
2 top pin Kit Qty (200)	TP-F10-5T (.150")
3 top pin Kit Qty (200)	TP-H10-9W (.135")
4 top pin Kit Qty (200)	TP-F10-4W-6T (.120")
5 top pin Kit Qty (200)	TP-F10-3W (.090")
6 top pin Kit Qty (200)	TP-F10-2W (.060")

Thumbturn Knobs

Description	Part Number
 Decorative "RD"	CP-285901-XX
 Lever "RL"	CP-285931-XX
 Round "SR"	CP-285961-XX
 Low Profile "LP"	CP-285991-XX
 Crescent "CR"	CP-286021-XX
 Spade "SP"	CP-286051-XX

Thumbturn Extension Kits -Plugs & Shells

Description	Part Number
5mm	94-0206-C05
5mm	94-0206-T05
10mm	94-0206-T10
15mm	94-0206-T15
20mm	94-0206-T20
25mm	94-0206-T25
30mm	94-0206-T30
35mm	94-0206-T35
40mm	94-0206-T40
45mm	94-0206-T45
50mm	94-0206-T50
55mm	94-0206-T55

**Refer to the eCylinder section for more detail on specific technologies available and pricing. The * in the part number is replaced with:
 T = Medeco³, S = Medeco³ Logic, J = Medeco³ BjLevel, W = Biaxial, V = Medeco Biaxial Logic, K = Medeco KM, N = Medeco X4, C = Medeco Logic,
 "-." = Original, Z = Medeco Original KW Logic, G = Medeco XT ***See key section for surcharges for custom coined cut keys or special stamping requirements.
Note: (P) refers to **Pinned** and **(S)** to **Sub-Pinned** at the end of each part string in the price book.

Cylinder Extension Kits -Plugs & Shells

Description	Part Number
10mm	94-0206-C10
15mm	94-0206-C15
20mm	94-0206-C20
25mm	94-0206-C25
30mm	94-0206-C30
35mm	94-0206-C35
40mm	94-0206-C40
45mm	94-0206-C45
50mm	94-0206-C50
55mm	94-0206-C55

Medeco XT Half Cylinder Connecting Bar

*Quantities shown in parentheses below are included in the 94-0279 Euroline half cylinder kit listed above. Additional items may be ordered individually.



Description	Part Number
40, 45mm Kit Qty (6)	CP-200801-12
50, 55mm Kit Qty (5)	CP-200801-14
60, 65mm Kit Qty (3)	CP-200801-16
70, 75mm Kit Qty (3)	CP-200801-18
80, 85 mm Kit Qty (3)	CP-200801-1A



Plug Extensions Outer for 94-0279

Description	Part Number
10mm Kit Qty (20)	CP-200751-10
15mm Kit Qty (15)	CP-200751-15
20mm Kit Qty (5)	CP-200751-20
25mm Kit Qty (5)	CP-200751-25

Brass Shell Extensions for 94-0279

Description	Part Number
5mm Kit Qty (20)	CP-200771-05
10mm Kit Qty (20)	CP-200771-10
15mm Kit Qty (10)	CP-200771-15
20mm Kit Qty (5)	CP-200771-20
25mm Kit Qty (5)	CP-200771-25

Bar Filler (2 per Cylinder) for 94-0279

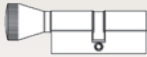

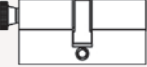

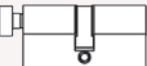
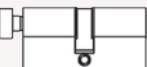
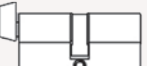


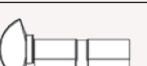
Description	Part Number
5 Pin, 0mm Kit Qty (20)	CP-160661-50
5 Pin, 5mm Kit Qty (20)	CP-160661-55

Miscellaneous Components for 94-0279

Description	Part Number
Half Shell Backend Kit Qty (20)	CP-200830
Actuator Spring Kit Qty (25)	CP-030860
Indexable Actuator Kit Qty (20)	CP-220090
Security Pin Kit Qty (25)	CP-060106
Groove Pin Kit Qty (65)	CP-063220
Indexible Cam	CT-Z88


**Refer to the eCylinder section for more detail on specific technologies available and pricing. The * in the part number is replaced with:
 T = Medeco³, S = Medeco³ Logic, J = Medeco³ BjLevel, W = Biaxial, V = Medeco Biaxial Logic, K = Medeco KM, N = Medeco X4, C = Medeco Logic,
 “-” = Original, Z = Medeco Original KW Logic, G = Medeco XT ***See key section for surcharges for custom coined cut keys or special stamping requirements.
Note: (P) refers to **Pinned** and **(S)** to **Sub-Pinned** at the end of each part string in the price book.

Euro Profile Single Cylinder with Thumbturn

Description	Part Number
 5 Pin, Standard Round "SR" Thumbturn	23*13005-X00
 6 Pin, Standard Round "SR" Thumbturn	23*13006-X00
 5 Pin, Low Profile "LP" Thumbturn	23*13035-X00
 6 Pin, Low Profile "LP" Thumbturn	23*13036-X00
 5 Pin, Removable Decorative "RD" Thumbturn	23*13045-X00
 6 Pin, Removable Decorative "RD" Thumbturn	23*13046-X00
 5 Pin, Removable Lever "RL" Thumbturn	23*13055-X00
 6 Pin, Removable Lever "RL" Thumbturn	23*13056-X00
 5 Pin, Euro Crescent "CR" Thumbturn	23*13065-X00
 6 Pin, Euro Crescent "CR" Thumbturn	23*13066-X00

**Refer to the eCylinder section for more detail on specific technologies available and pricing. The * in the part number is replaced with:
 T = Medeco³, S = Medeco³ Logic, J = Medeco³ BjLevel, W = Biaxial, V = Medeco Biaxial Logic, K = Medeco KM, N = Medeco X4, C = Medeco Logic,
 "-" = Original, Z = Medeco Original KW Logic, G = Medeco XT ***See key section for surcharges for custom coined cut keys or special stamping requirements.
Note: (P) refers to **Pinned** and **(S)** to **Sub-Pinned** at the end of each part string in the price book.

Euro Profile Double Cylinder

Description	Part Number
 5 Pin, No Extension	23*13025-X00
 5 Pin Extended, 5 mm Ext. Side (0mm/5mm)	23*13025-X01
 5 Pin Extended, 10 mm Ext. Side (0mm/10mm)	23*13025-X02
 5 Pin Extended, (5mm/5mm)	23*13025-X11
 5 Pin Extended, (5mm/10mm)	23*13025-X12
 6 Pin, No Extension	23*13026-X00
 6 Pin Extended, 5mm Ext. Side (0 mm/5 mm)	23*13026-X01
 6 Pin Extended, 10mm Ext. Side (0 mm/10 mm)	23*13026-X02
 6 Pin Extended, (5mm/10mm)	23*13026-X12

Euro Profile Double Cylinder

Description	Part Number
 5 Pin with 12 Position Indexable Cam	23*13015-800
 5 Pin, Extended 5 mm with 12 Position Indexable Cam	23*13015-801
 6 Pin with 12 Position Indexable Cam	23*13016-800
 6 Pin, Extended 5 mm with 12 Position Indexable Cam	23*13016-801

**Refer to the eCylinder section for more detail on specific technologies available and pricing. The * in the part number is replaced with:
 T = Medeco³, S = Medeco³ Logic, J = Medeco³ BjLevel, W = Biaxial, V = Medeco Biaxial Logic, K = Medeco KM, N = Medeco X4, C = Medeco Logic,
 “-” = Original, Z = Medeco Original KW Logic, G = Medeco XT ***See key section for surcharges for custom coined cut keys or special stamping requirements.
Note: (P) refers to **Pinned** and **(S)** to **Sub-Pinned** at the end of each part string in the price book.

Other International Cylinders

Description	Part Number
Danish Round Mortise Cylinder	23*01016
Danish Special Cam Lock (Ruko®)	23*010168
Australian Oval - Less Cams and Pins	23*03016A
5 Pin British Oval Single Cylinder with Thumbturn	23*04005
6 Pin British Oval Single Cylinder with Thumbturn	23*04006
5 Pin British Oval Half Cylinder	23*04015
6 Pin British Oval Half Cylinder	23*04016
5 Pin British Oval Double Cylinder	23*04025
6 Pin British Oval Double Cylinder	23*04026
Scandinavian Oval Exterior Cylinder	23*05016
Scandinavian Oval Interior Cylinder	23*06016
Norwegian Oval Shape Cylinder	23*070165
Scandinavian Snowman Cylinder	23*080166
Scandinavian Round Exterior Cylinder	23*09016
Scandinavian Round Interior Cylinder	23*10016
Italian Cylinder Inner Gate Lock, 3 Pin	23*14003
Italian Cylinder Exterior Gate Lock, 5 Pin	23*15005
Italian Roller Shutter 4 Pin	23*16004
Danish Special Oval Cylinder Assembly	23*17016
Danish Cam Lock (for Ruko®) w/ 90° Stop	23*20016

**Refer to the eCylinder section for more detail on specific technologies available and pricing. The * in the part number is replaced with:
T = Medeco³, S = Medeco³ Logic, J = Medeco³ BjLevel, W = Biaxial, V = Medeco Biaxial Logic, K = Medeco KM, N = Medeco X4, C = Medeco Logic,
“-” = Original, Z = Medeco Original KW Logic, G = Medeco XT ***See key section for surcharges for custom coined cut keys or special stamping requirements.
Note: (P) refers to **Pinned** and **(S)** to **Sub-Pinned** at the end of each part string in the price book.

Profile Components

Description	Part Number
5 Pin Plug For Half Cylinder	12-286XXX-XX
5 Pin Double Cylinder Profile Plug	12-286XXX-XX-XX
6 Pin Plug For Half Cylinder	12-288XXX-XX
6 Pin Double Cylinder Profile Plug	12-288XXX-XX-XX
5 Pin Double Cylinder Profile Shell	13-32700X-00
6 Pin Double Cylinder Profile Shell	13-34600X-00
5 Pin Shell For Half Cylinder	13-36500X
6 Pin Shell For Half Cylinder	13-37500X
Thumbturn Set Screw	CP-011013-020
Profile Cylinder Set Screw, #8-32 x 1/4"	CP-011013-040
Set Screw for "CR" Thumbturn	CP-012409-030
Thumbturn Set Screw	CP-012411-030
Set Screw For Removable Thumbturn	CP-012411-040
Thumbturn Retaining Clip	CP-020031
Cartridge Retainer	CP-020240
Plug Retaining Clip - Old Style, C Clip	CP-021400
Plug Retaining Clip - Continuous Ring	CP-021490
Tumbler Spring	CP-030001
Single Cylinder Profile Pilot Spring	CP-030024
Single Cylinder Profile Thumbturn Actuator Spring	CP-030025
Actuator Spring For Half Cylinder	CP-030860
Snap Ring	CP-031030
Single Cylinder Profile Actuator	CP-100111
Double Cylinder Profile Clutch	CP-220071
5 and 6 Pin Actuator For Half Cylinder	CP-220090
Clutch Assembly, Emergency	CP-220120
Double Cylinder Profile Gear Cam	CP-230081
Thumbturn Cylinder Profile Gear Cam	CP-230091
Single Cylinder Profile Thumbturn Actuator Pilot	CP-280261
Standard Round "SR" Thumbturn Assembly 5 Pin	CP-285981-500
Low Profile "LP" Thumbturn Assembly 5 Pin	CP-286011-500
Lever "RL" Thumbturn Assembly 5 Pin	CP-285951-500
Decorative "RD" Thumbturn Assembly 5 Pin	CP-285921-500
Decorative "RD" Thumbturn Only	CP-285901
Lever "RL" Thumbturn Only	CP-285931
Low Profile "SR" Thumbturn Only	CP-285961
Low Profile "LP" Thumbturn Only	CP-285991
Crescent "CR" Thumbturn Assembly 5 Pin	CP-286041-500
Oval Int./Ext. Cylinder tailpiece	CT-Y76
Cam, British Oval (Half/Double)	CT-Z26
Cam, British Oval (Thumbturn)	CT-Z29
Double Cylinder Profile Cam	CT-Z50
Thumbturn Cylinder Profile Cam, Non Indexing	CT-Z51
Indexing Cam For Half Cylinders	CT-Z88
Cam, Medeco XT Double Profile Cyl	CT-Z98

**Refer to the eCylinder section for more detail on specific technologies available and pricing. The * in the part number is replaced with:
T = Medeco³, S = Medeco³ Logic, J = Medeco³ BjLevel, W = Biaxial, V = Medeco Biaxial Logic, K = Medeco KM, N = Medeco X4, C = Medeco Logic,
“-” = Original, Z = Medeco Original KW Logic, G = Medeco XT ***See key section for surcharges for custom coined cut keys or special stamping requirements.
Note: (P) refers to **Pinned** and **(S)** to **Sub-Pinned** at the end of each part string in the price book.